

The mature sporophyte is differentiated into three parts -

- ① Foot
- ② Seta
- ③ Capsule.

① Foot → it is the basal part of the sporophyte.  
→ It is bulbous bulbous.  
→ It acts as haustoria.  
→ made up of parenchyma cells.

② Seta → is between foot & Capsule.  
→ It is inconspicuous structure.

③ Capsule → It is fertile & most important part of the sporophyte.  
→ Brown in colour / black colour.  
→ almost spherical structure.

Capsule consists of following structures -

① Epidermis → outermost layer  
→ thick walled  
→ Consists of nonfunctional and rudimentary stomata.  
→ Chloroplasts are present in the cells of capsule wall.

② Operculum → is present at the apex of the Capsule.  
→ biconvex & disc shaped.

③ Annulus → It is present b/w operculum & rest part of the Capsule.  
→ It is made up of thin walled cells.

Note - At maturity of, the operculum breaks off from the annulus & helps in dispersal of spores.

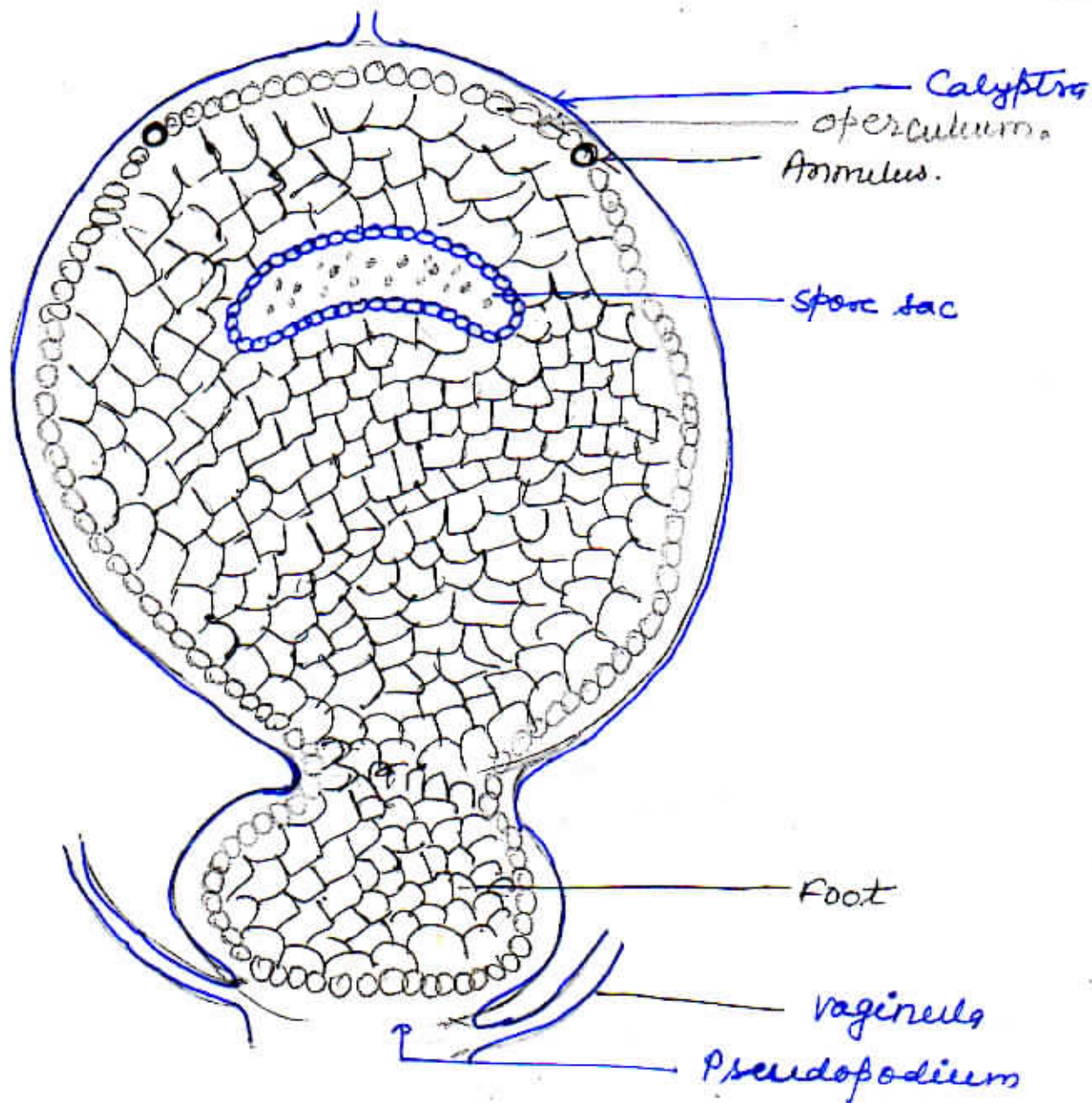


Fig L.S of sporophyte.

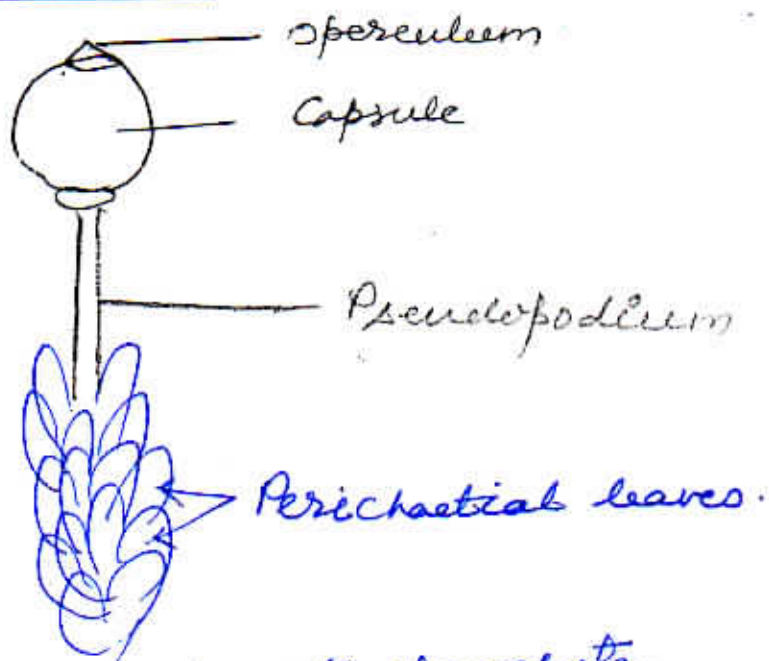


Fig. A branch with sporophyte.